

Wet Area Waterproofing System

WATERPROOF WET AREAS PRIOR TO TILING – CONFORMS TO AS3740

FLEXIBLE SEALER HYDRATHANE

PACKAGING



MIXING



APPLICATION



LIQUID FLASH 2 PACK

PACKAGING



MIXING



APPLICATION



SUBSTRATES

FLOORS
CONCRETE
CEMENT SHEET

WALLS
BRICK
BLOCK
GYPSUM BUILDING
BOARDS
CEMENT SHEET

WATERPROOFING MEMBRANES

HYDRATHANE – A fast cure water-based Polyurethane.

FLEXIBLE SEALER – Water based acrylic membrane.

LIQUID FLASH 2 PACK – A 2 pack fast cure acrylic membrane.

Floors – Concrete, Fibre reinforced cement sheets.

Walls – Cement render – Masonry, Concrete, Fibre reinforced cement sheets, Water resistant plasterboard sheets.

APPLICATION TEMPERATURE 10°–30°C

SURFACE PREPARATION

Waterproofing must be in accordance with AS3740

Surfaces to be waterproofed must be sound and free of dirt, dust, grease and other contaminants and allowed to dry before priming. The waste hole in compressed cement flooring must be cut no more than 5mm larger than the external diameter of the drainage flange. New concrete must have cured for 28 days.

BOND BREAKING TAPE

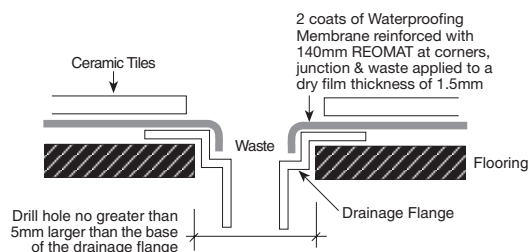
At junctions in building surfaces and over cracks and sheet joints place a bond breaking tape or neutral cure silicone (as per AS3740) and reinforce the first wet coat of membrane with 140mm REOMAT to accommodate extremes in movement. Place the bond-breaker system centrally over the junction or crack.

FLEXIBLE MASTIC

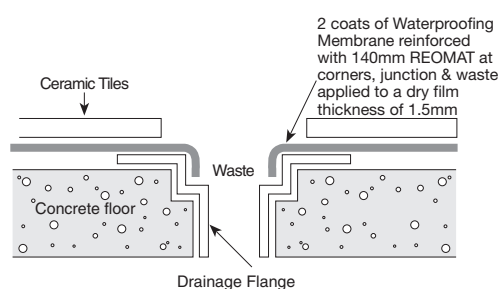
Apply COLOUR SEAL to tiled junctions (in place of grout) i.e. wall/bath, sink/basin, wall/floor, wall/wall, tap, rose/wall.

PRIMING

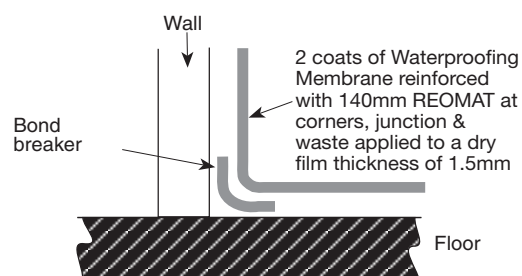
Apply PRIMER & GROUT ADDITIVE with a brush to the prepared dry surface. When the surface becomes dry (after approximately 15-20 minutes) apply the waterproofing membrane – wash up with clean water.



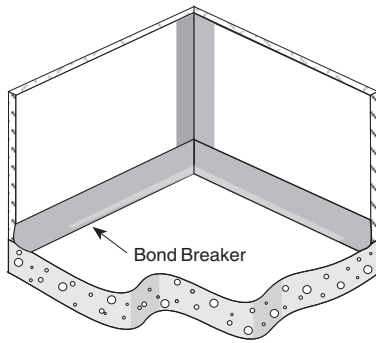
Floor waste connected to timber or cement sheet flooring



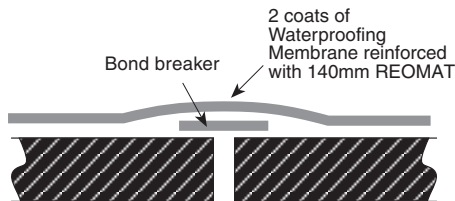
Floor waste in a concrete floor



Floor & Wall Junction



Floor & Wall Junction



Floor sheeting / Wall board Junction

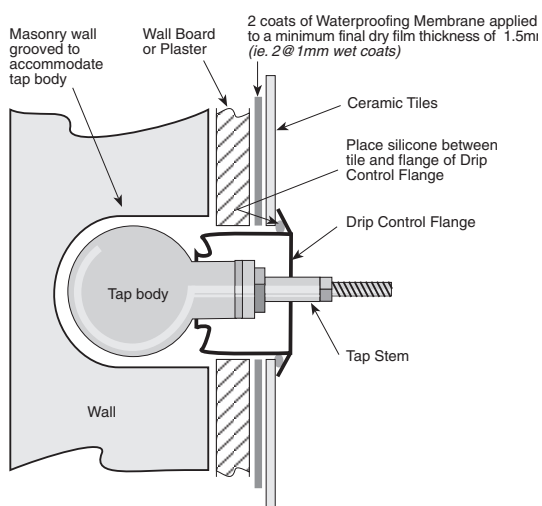
APPLY 1st COAT TO THE WALL (1.0mm wet film thickness)

Apply a thick coat of Waterproofing Membrane 75mm either side of the wall junctions and around tap outlets. Immediately bed in the REOMAT, then coat the remainder of the wall. Coat to a height of 1.8m in shower alcoves. 300mm above bath sinks, troughs, etc. and 100mm above the floor. The 100mm above the floor should be left to be coated with the floor coating.

APPLY 1st COAT TO THE FLOOR (1.5mm wet film thickness)

Check the wet film thickness at 0.5 metre intervals and also at 0.5 metres along the bond breaking tape.

Shower Areas – Apply the Waterproofing Membrane to the primed shower floor and 100mm up the wall, hob and waste. Apply a thick coat and immediately bed the REOMAT into the wet Waterproofing Membrane. Force the mat into the wet Waterproofing Membrane from different directions to preclude entrapped air and to bed mat firmly to the floor around the waste.



Tap or Fitting Connection

HANDY TIP

Bedding REOMAT into the WATERPROOFING MEMBRANE is made easier by using clean wet rubber gloves and thick coats of WATERPROOFING MEMBRANE.

Wet Area Floors – Apply a thick coat of Waterproofing Membrane 100mm up the wall, floor and waste then immediately press the REOMAT into the Waterproofing Membrane at junctions and corners. Apply a thick coat of Waterproofing Membrane to the remaining floor area.

APPLY a 2nd COAT (1.0mm wet film thickness)

Apply a 2nd coat of Waterproofing Membrane to the wall first then the floor, working towards the exit. Recoat time is 2 hours. Apply a 2nd coat of Waterproofing Membrane at 90° to all previous coats, applying a thick coat to fully saturate and cover the REOMAT. Clean up the uncured coating with clean water.

THICKNESS Check the wet film thickness at 0.5 metre intervals and also at 0.5 metres along the bond breaking tape, with a wet film thickness gauge.

ADHERE TILES

Allow the membrane to cure for 72 hours before fixing tiles with KEMGRIP mixed with ELASTACRETE or GRIFPLEX, MONOFLEX, KEMFLEX 2:1. Tiles must be laid so that adequate fall is towards the floor waste. A cement screed can be used to achieve this.

GROUTING

Allow adhesive to cure 24 hours before grouting with KEMGROUT FLEXIBLE.

FLEXIBLE MASTIC

Apply COLOUR SEAL in place of the grout in:

Shower Alcoves – at the junction of the wall/wall, wall/floor, hob/floor and hob/wall.

Trough, Sink & Baths – at the junction of the tiles and the trough, sink or bath for the length of the fixture and the bath surround and the wall.

PRECAUTIONS

Do not use shower for 28 days after applying waterproofing membrane. It is advisable to flood test the shower after curing (approx. 72 hours 20°C 50%RH). This should be done before tiling commences.

SAFETY PRECAUTIONS

FLEXIBLE SEALER, HYDRATHANE, LIQUID FLASH 2 PACK and PRIMER AND GROUT ADDITIVE are not harmful or toxic. Splashes on the skin and eyes must be washed away with clean water. Apply products in well ventilated areas.



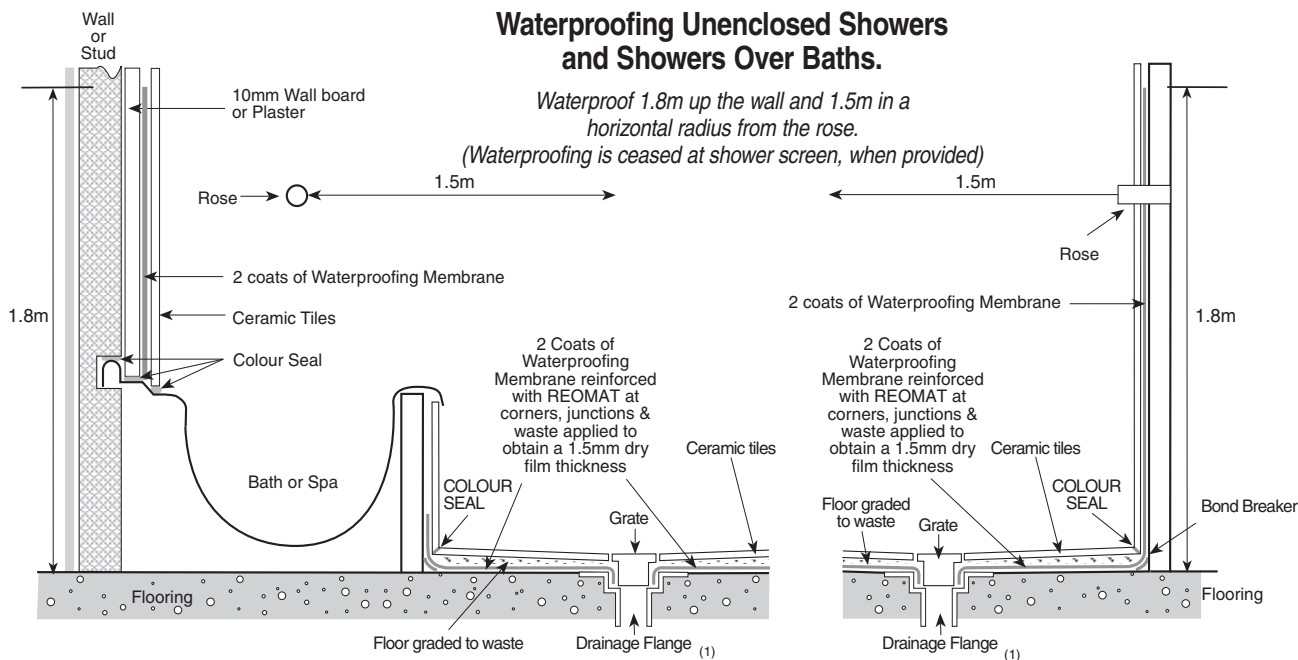
- **ADELAIDE** 135 CORMACK RD (Cnr Davis St) WINGFIELD 5013 PH: (08) 8243 7888 FAX: (08) 8243 7800
- **BRISBANE** 45 COULSON ST WACOL 4076 PH: (07) 3271 2944 FAX: (07) 3271 3892
- **MELBOURNE** 11 GABRIELLE CT BAYSWATER NORTH 3153 PH: (03) 9761 4711 FAX: (03) 9761 4748
- **PERTH** 11 COLLIE ST WELSHPOOL 6106 PH: (08) 9356 9999 FAX: (08) 9356 9955
- **SYDNEY** 31-33 NEWTON RD WETHERILL PARK 2164 PH: (02) 9756 3533 FAX: (02) 9756 3534
- **AUCKLAND** 16 CARPENTER RD EAST TAMAKI PH: (09) 273 5444 FAX: 0800 266 236
- **KUALA LUMPUR** LOT 2 JALAN KECAPI 33/2 ELITE INDUSTRIAL ESTATE OFF JALAN BUKIT KEMUNING 40000 SHAH ALAM PH: (603) 5122 2522 FAX: (603) 5122 2526

www.constructionchemicals.com.au

"The information contained in this technical publication is based on our current knowledge and experience and is provided as a guide only. In view of the many factors that may affect application it is the user's sole responsibility to ensure suitability for a specific purpose."

Waterproofing Unenclosed Showers and Showers Over Baths.

Waterproof 1.8m up the wall and 1.5m in a horizontal radius from the rose.
(Waterproofing is ceased at shower screen, when provided)

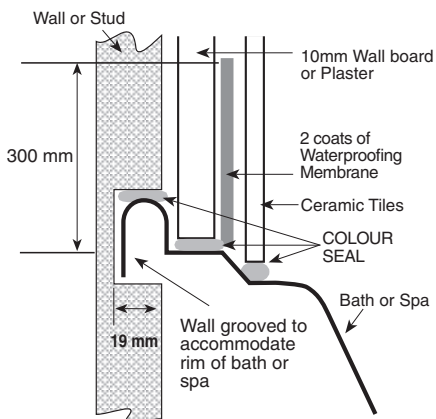


Shower Over a Bath

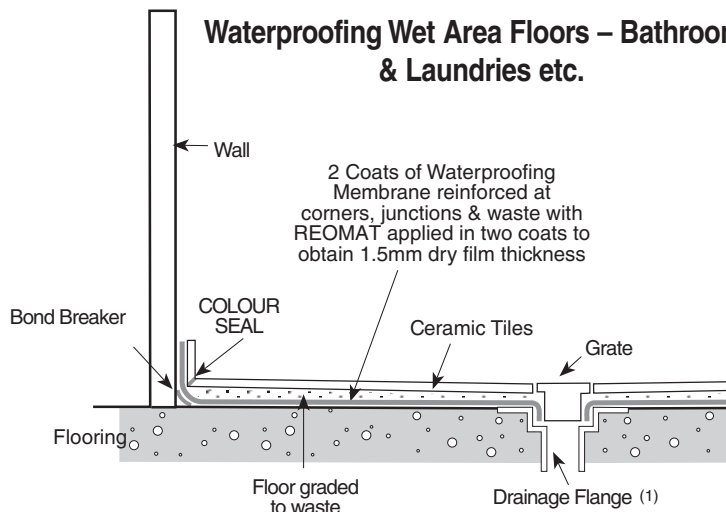
Unenclosed Shower

Waterproofing above Baths, Sinks, Troughs etc.

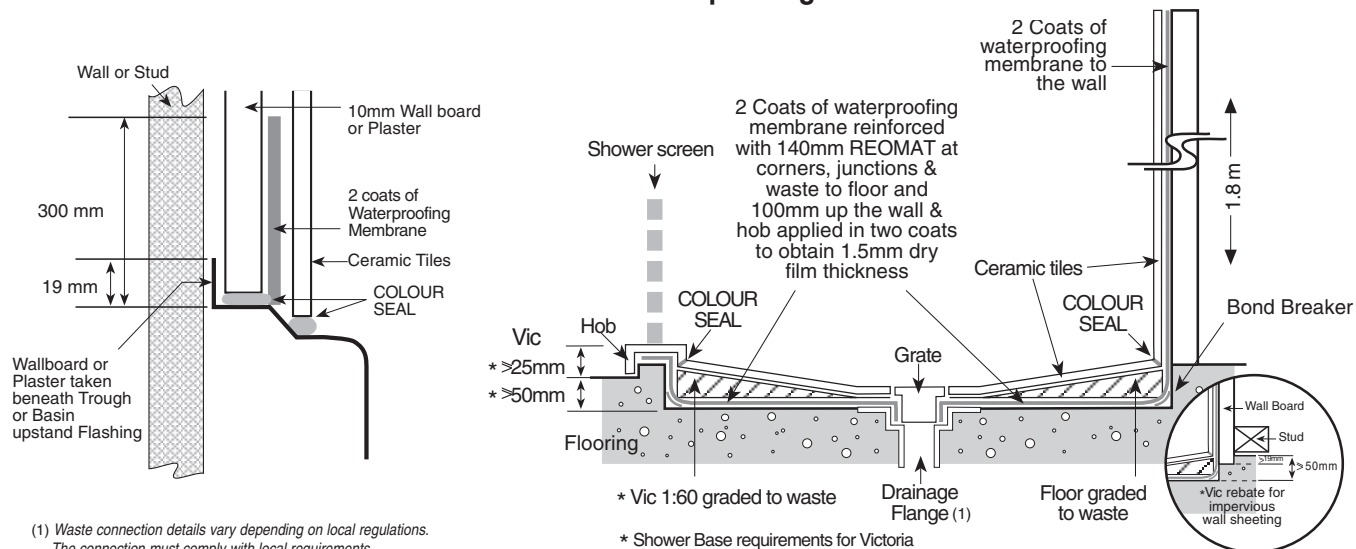
Waterproof a minimum of 300mm above the fixture for its length when fixture is within 75mm of the wall.



Waterproofing Wet Area Floors – Bathrooms & Laundries etc.



Waterproofing an Enclosed Shower



(1) Waste connection details vary depending on local regulations. The connection must comply with local requirements.

* Vic 1:60 graded to waste
* Shower Base requirements for Victoria