

# Waterproofing External Masonry Walls

## PRIMAX

### PACKAGING



### MIXING



### APPLICATION



## LEVELLING COAT

### PACKAGING



### MIXING



### APPLICATION



## FINISHING COAT

### PACKAGING



### MIXING



### APPLICATION



## SUBSTRATES

CONCRETE,  
BRICK,  
BLOCK,  
CEMENT RENDER,  
LIGHT WEIGHT  
BLOCK,  
LIMESTONE BLOCK

## MATERIALS:

CEMCOTE (cement based waterproof coating), ACRYBOND (acrylic bonding additive), PRIMAX, ELASTAKOTE, ROLTEX (water based acrylic coating) are manufactured by Construction Chemicals.

## SURFACE PREPARATION:

All surfaces must be clean and sound and free of grease, dust, coatings and other contaminants. New concrete must have cured for 28 days or more.

## WORKMANSHIP:

Apply products in accordance with the manufacturer's written instructions and good trade practice.

## APPLICATION

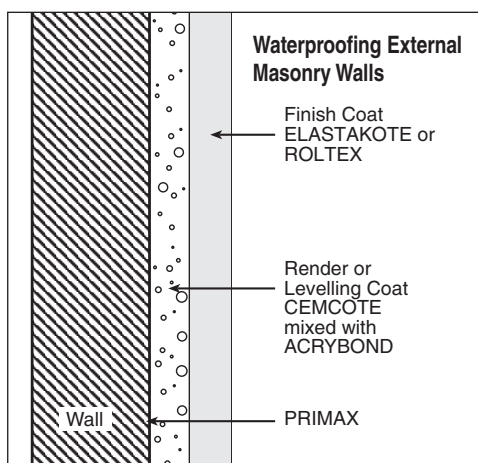
Apply the mixed PRIMAX only with a hard brush or broom, making sure to push the mixture firmly into the substrate. Apply mixture approximately 0.5mm thick and allow to cure 1-2 hours at 23°C at 50% RH before proceeding.

### Levelling Coat

Dilute 1 part of ACRYBOND with 3 parts of water and use that as the mixing for the CEMCOTE. Application above 5mm 5kg of sharp clean sand can be added to each 20kg of CEMCOTE before mixing in the mixing solution.

### Finish Coat

Apply two coats of ELASTAKOTE and one coat of ROLTEX, depending on the desired texture or finish.


**CONSTRUCTION  
CHEMICALS**

- **ADELAIDE** 135 CORMACK RD (Cnr Davis St) WINGFIELD 5013 PH: (08) 8243 7888 FAX: (08) 8243 7800
- **BRISBANE** 45 COULSON ST WACOL 4076 PH: (07) 3271 2944 FAX: (07) 3271 3892
- **MELBOURNE** 11 GABRIELLE CT BAYSWATER NORTH 3153 PH: (03) 9761 4711 FAX: (03) 9761 4748
- **PERTH** 11 COLLIE ST WELSHPOOL 6106 PH: (08) 9356 9999 FAX: (08) 9356 9955
- **SYDNEY** 31-33 NEWTON RD WETHERILL PARK 2164 PH: (02) 9756 3533 FAX: (02) 9756 3534
- **AUCKLAND** 16 CARPENTER RD EAST TAMAKI PH: (09) 273 5444 FAX: 0800 266 236
- **KUALA LUMPUR** LOT 2 JALAN KECABI 33/2 ELITE INDUSTRIAL ESTATE OFF JALAN BUKIT KEMUNING 40000 SHAB ALAM PH: (603) 5122 2522 FAX: (603) 5122 2526

[www.constructionchemicals.com.au](http://www.constructionchemicals.com.au)

"The information contained in this technical publication is based on our current knowledge and experience and is provided as a guide only. In view of the many factors that may affect application it is the users sole responsibility to ensure suitability for a specific purpose."